

1355 U ST NW



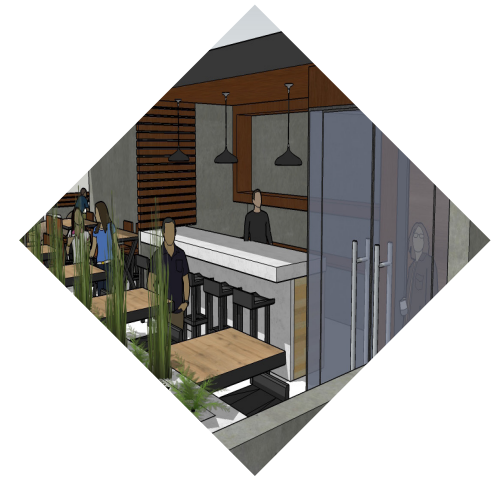
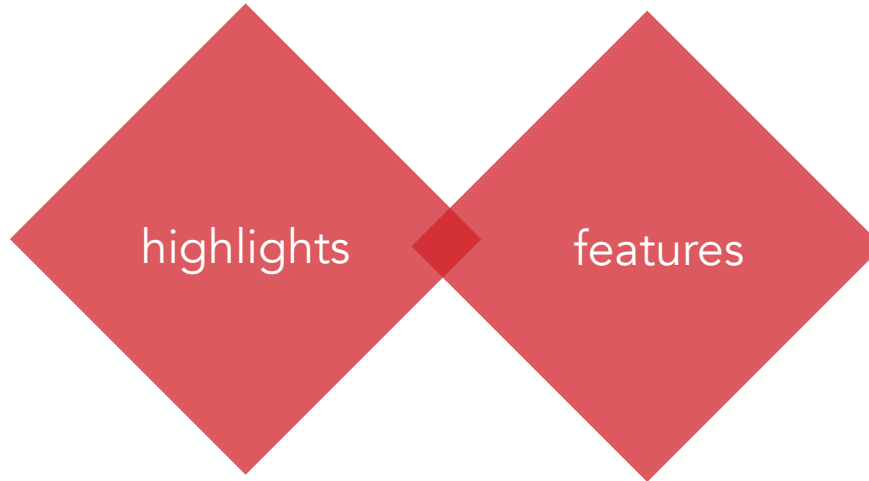
8,400 SF of prime restaurant/bar space which includes 1,750 SF of roof top space

bustling retail/restaurant corridor

new construction just off the corner of 14th & U st NW

close proximity to U street / Cardozo metro center

"main and main" location



NEIGHBORING TENANTS



Madewell

SHINOLA DETROIT

THE SMITH restaurant & bar

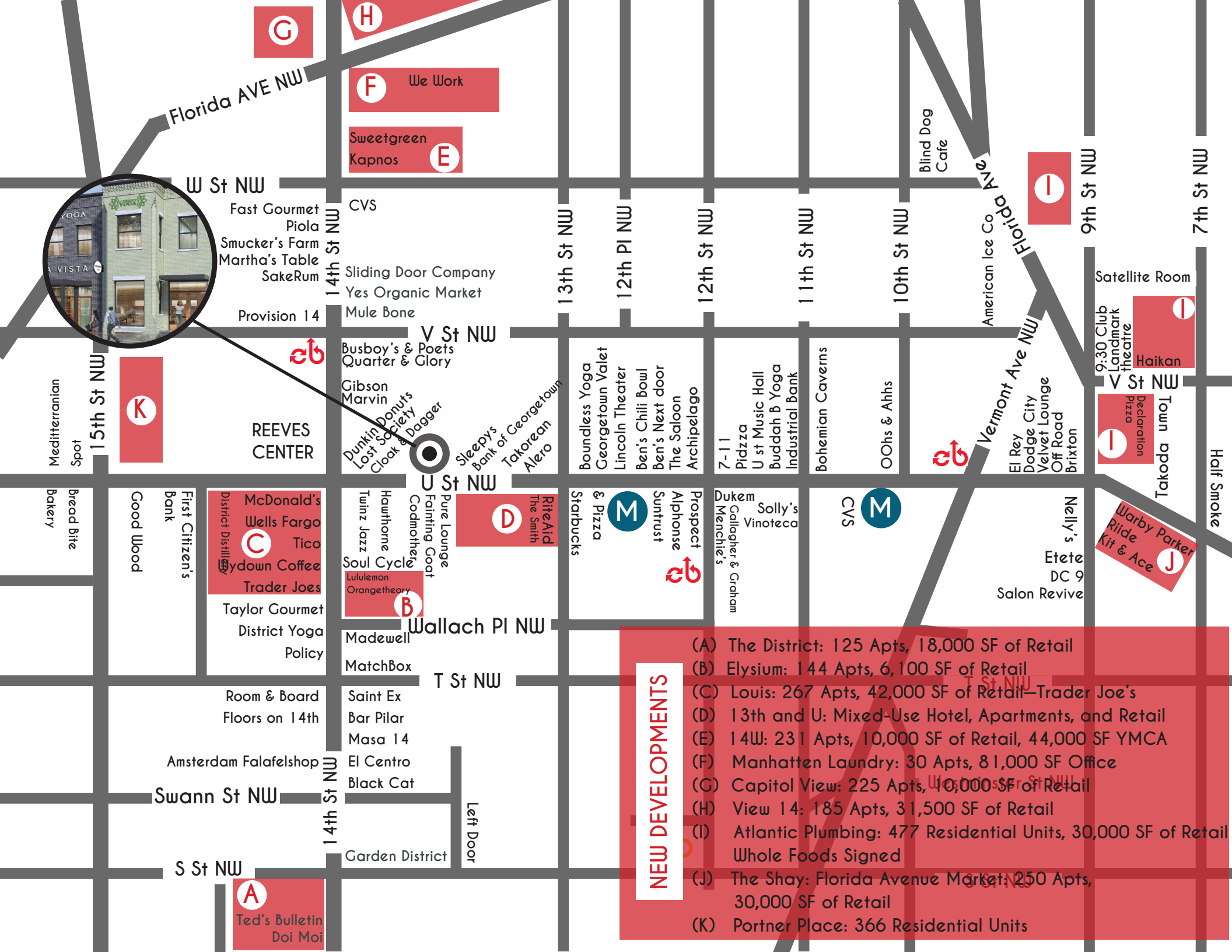
TRADER JOE'S

lululemon athletica

west elm

FILSON SINCE 1987

HAWTHORNE ROOFTOP • TAVERN



- NEW DEVELOPMENTS**
- (A) The District: 125 Apts, 18,000 SF of Retail
 - (B) Elysium: 144 Apts, 6,100 SF of Retail
 - (C) Louis: 267 Apts, 42,000 SF of Retail—Trader Joe's
 - (D) 13th and U: Mixed-Use Hotel, Apartments, and Retail
 - (E) 14W: 231 Apts, 10,000 SF of Retail, 44,000 SF YMCA
 - (F) Manhattan Laundry: 30 Apts, 81,000 SF Office
 - (G) Capitol View: 225 Apts, 10,000 SF of Retail
 - (H) View 14: 185 Apts, 31,500 SF of Retail
 - (I) Atlantic Plumbing: 477 Residential Units, 30,000 SF of Retail
Whole Foods Signed
 - (J) The Shay: Florida Avenue Market: 250 Apts, 30,000 SF of Retail
 - (K) Portner Place: 366 Residential Units

14TH & U ST NW

in America, is at the center of DC's renaissance. The commercial vitality is centered along the 14th & U Street corridors where young professionals come to visit to experience some of the best mix of high-end dining, retail, residential, entertainment and cultural offerings in DC.*



Median income
\$122k

Wework, Shinola,
Filson, Soul Cycle,
Lululemon, Madewell

NEW ANCHORS

residents within a
10 min walk

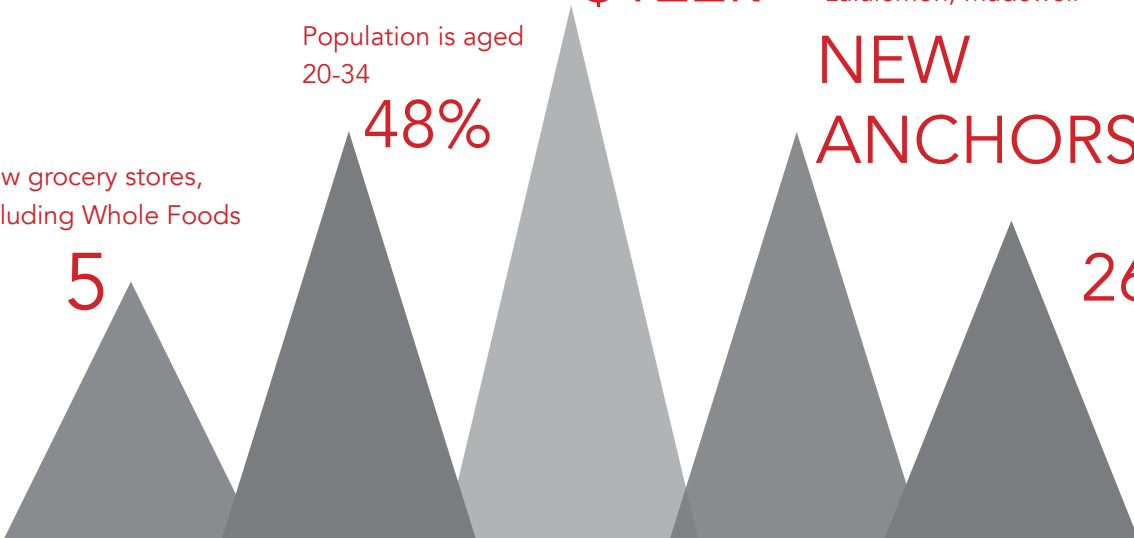
26,000

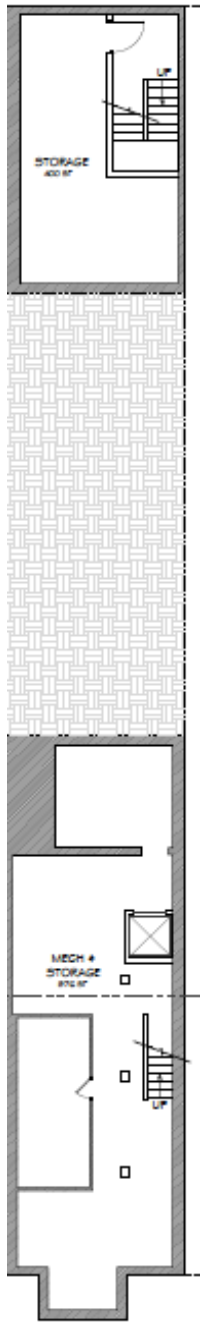
Population is aged
20-34

48%

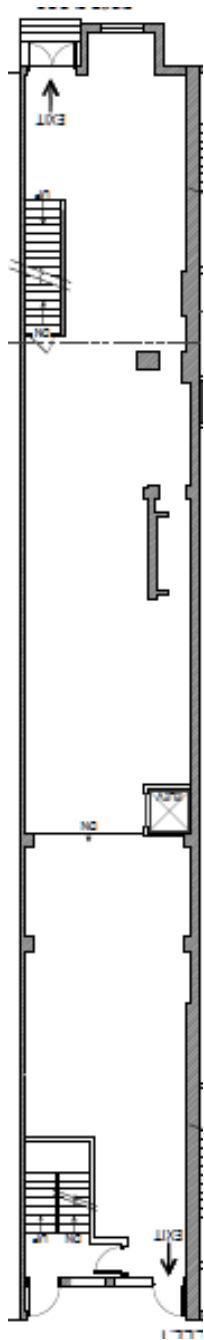
New grocery stores,
including Whole Foods

5

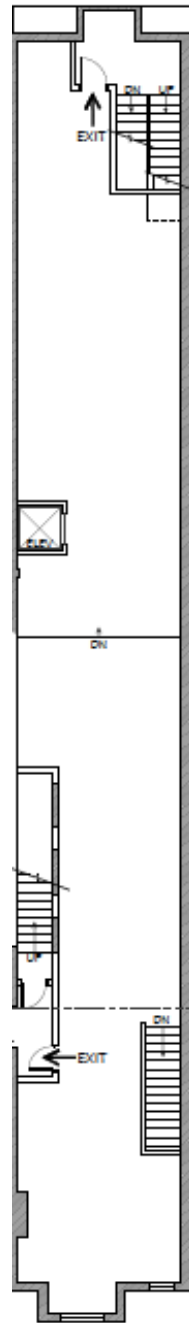




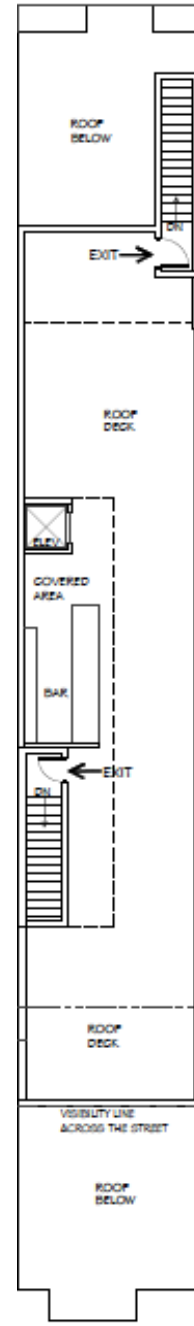
Lower Level
1,588 SF



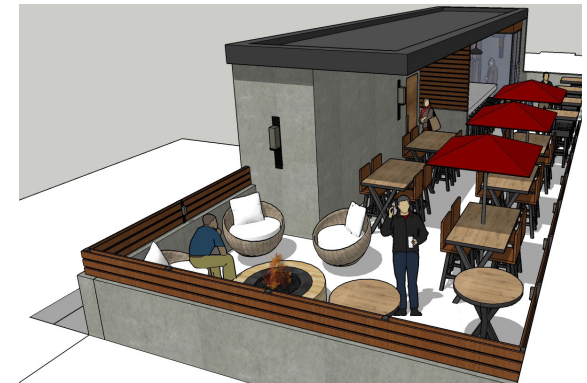
Ground Level
2,642 SF



Second Level
2,420 SF



Roof Top
1,750 SF





PULSE RETAIL

JOSH MILLER
(202) 360.6435
jmiller@PPGDC.com

PATRICK SLAGLE
(202) 250.3646
pslagle@PPGDC.com

1348 FLORIDA AVE NW
WASHINGTON DC 20009
WWW.PPGDC.COM